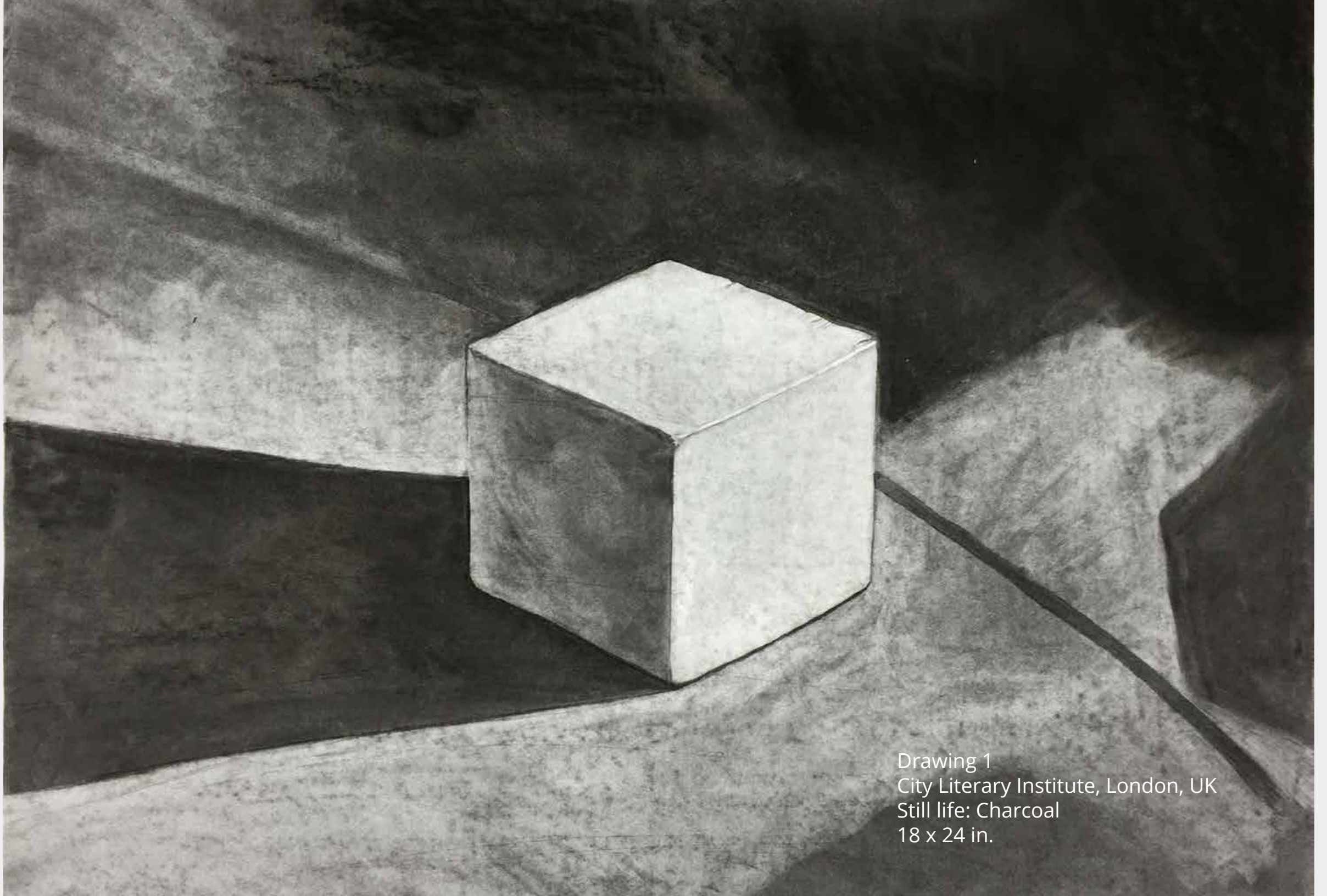
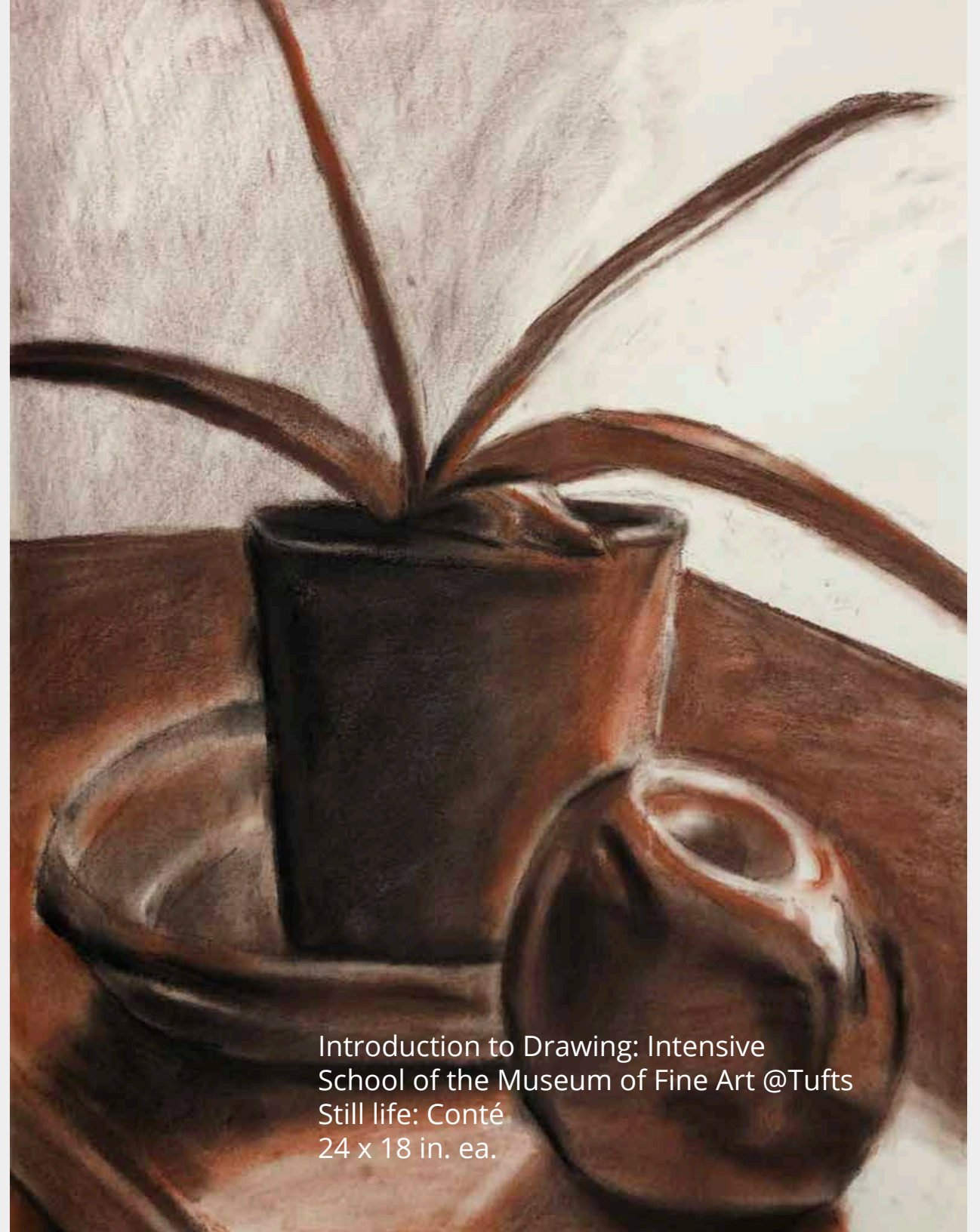


j o h n r o s
student portfolio
drawing + painting



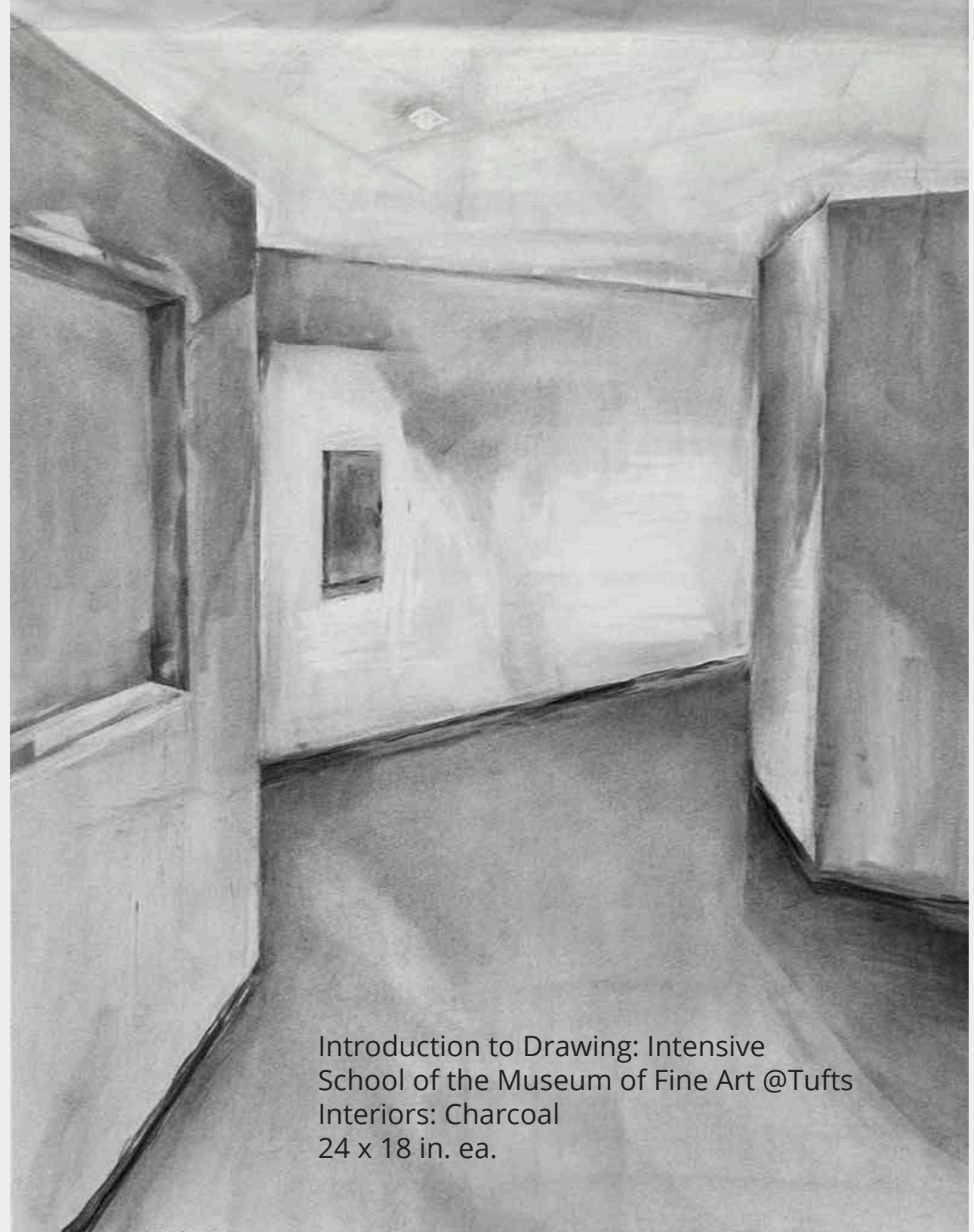
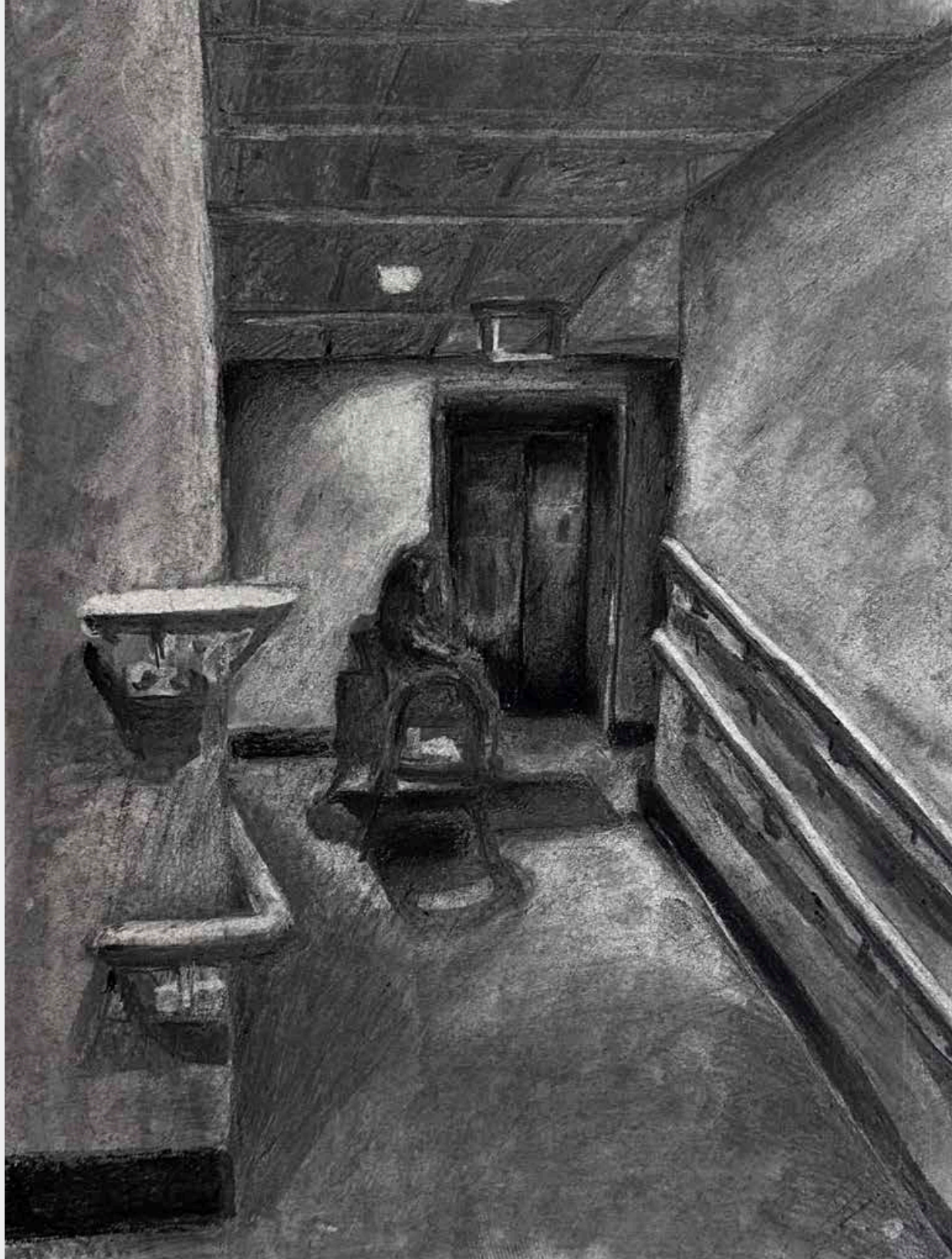
Drawing 1
City Literary Institute, London, UK
Still life: Charcoal
18 x 24 in.



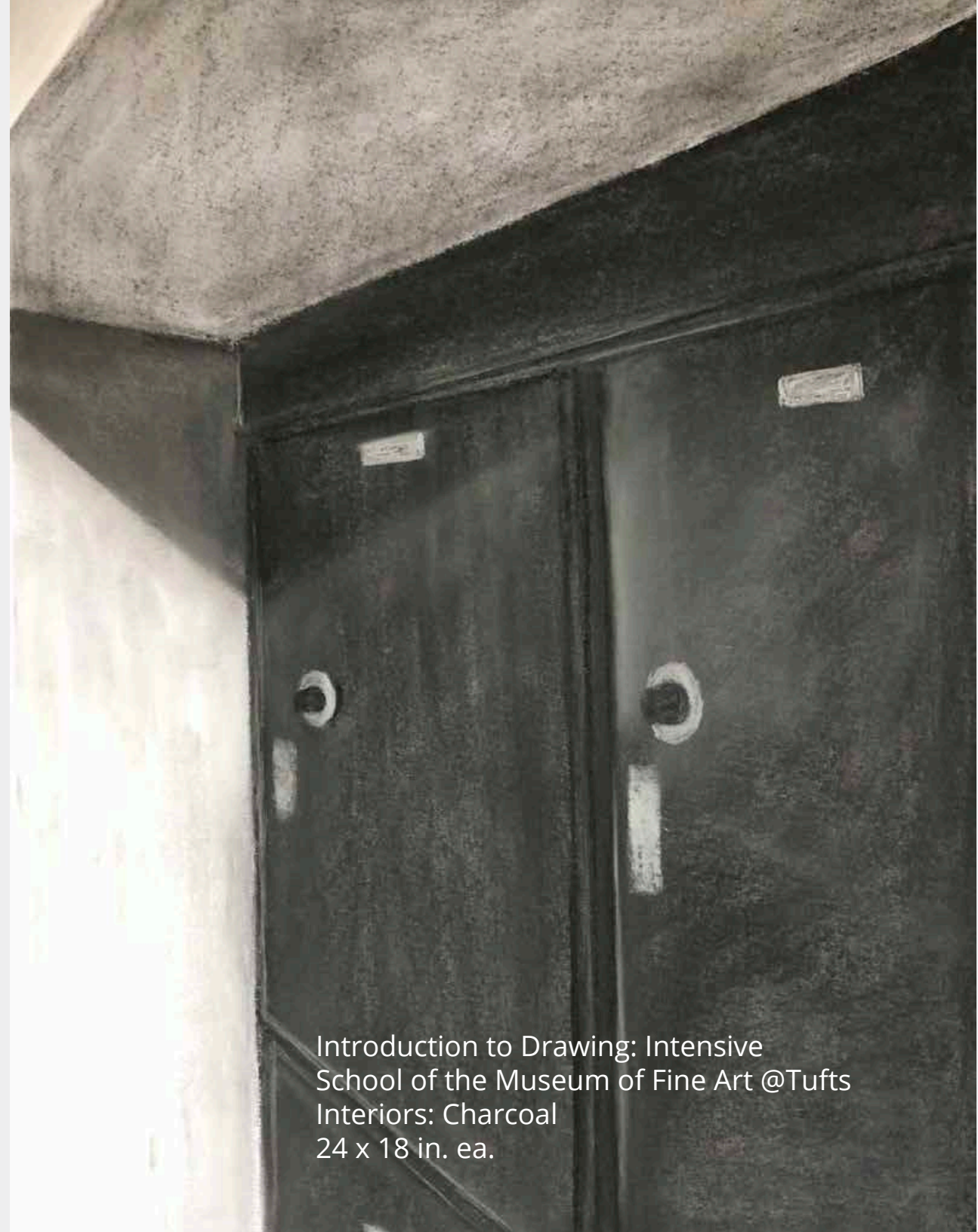
Introduction to Drawing: Intensive
School of the Museum of Fine Art @Tufts
Still life: Conté
24 x 18 in. ea.



Introduction to Drawing: Intensive
School of the Museum of Fine Art
Personal object: Conté
18 x 24 in.



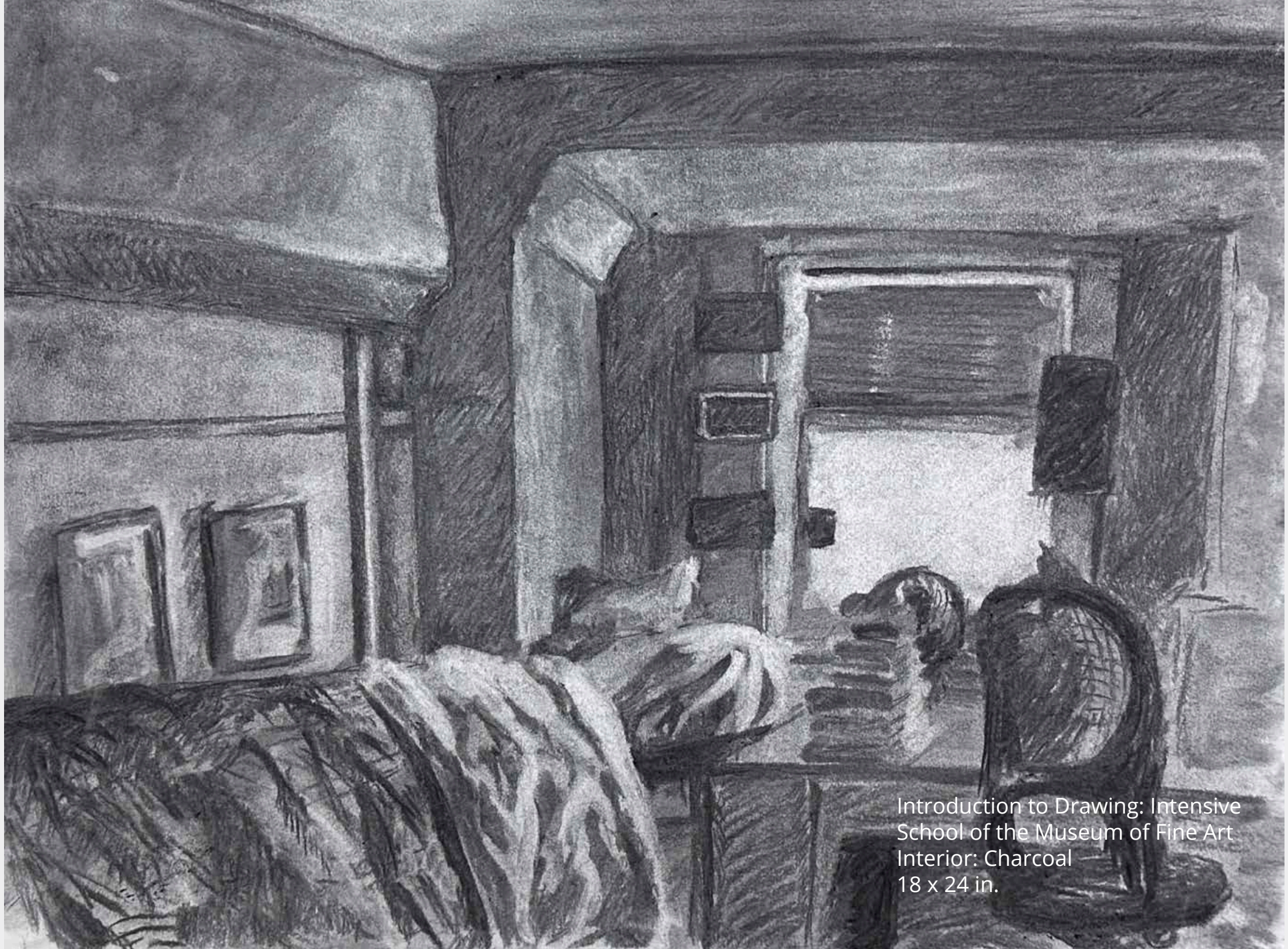
Introduction to Drawing: Intensive
School of the Museum of Fine Art @Tufts
Interiors: Charcoal
24 x 18 in. ea.



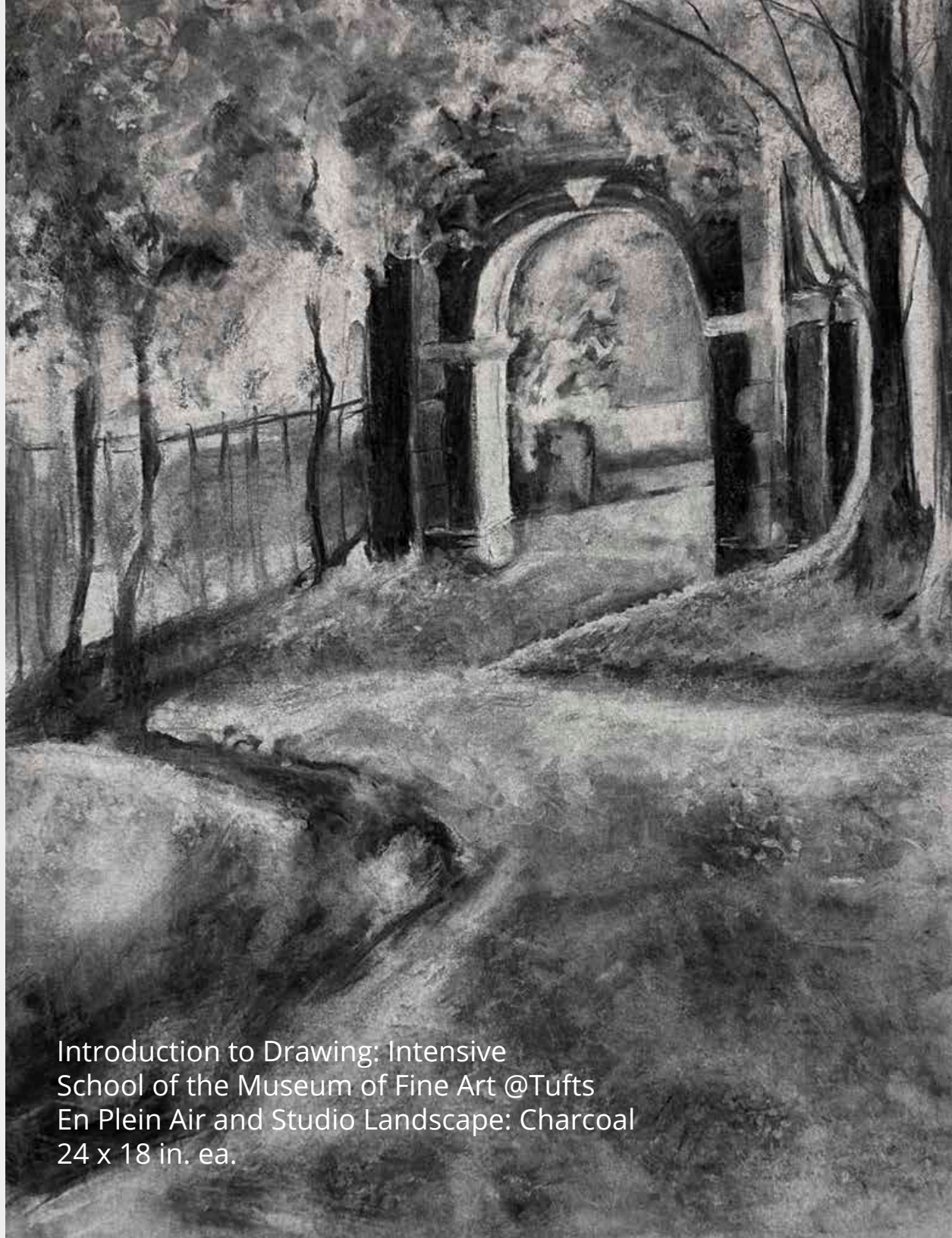
Introduction to Drawing: Intensive
School of the Museum of Fine Art @Tufts
Interiors: Charcoal
24 x 18 in. ea.



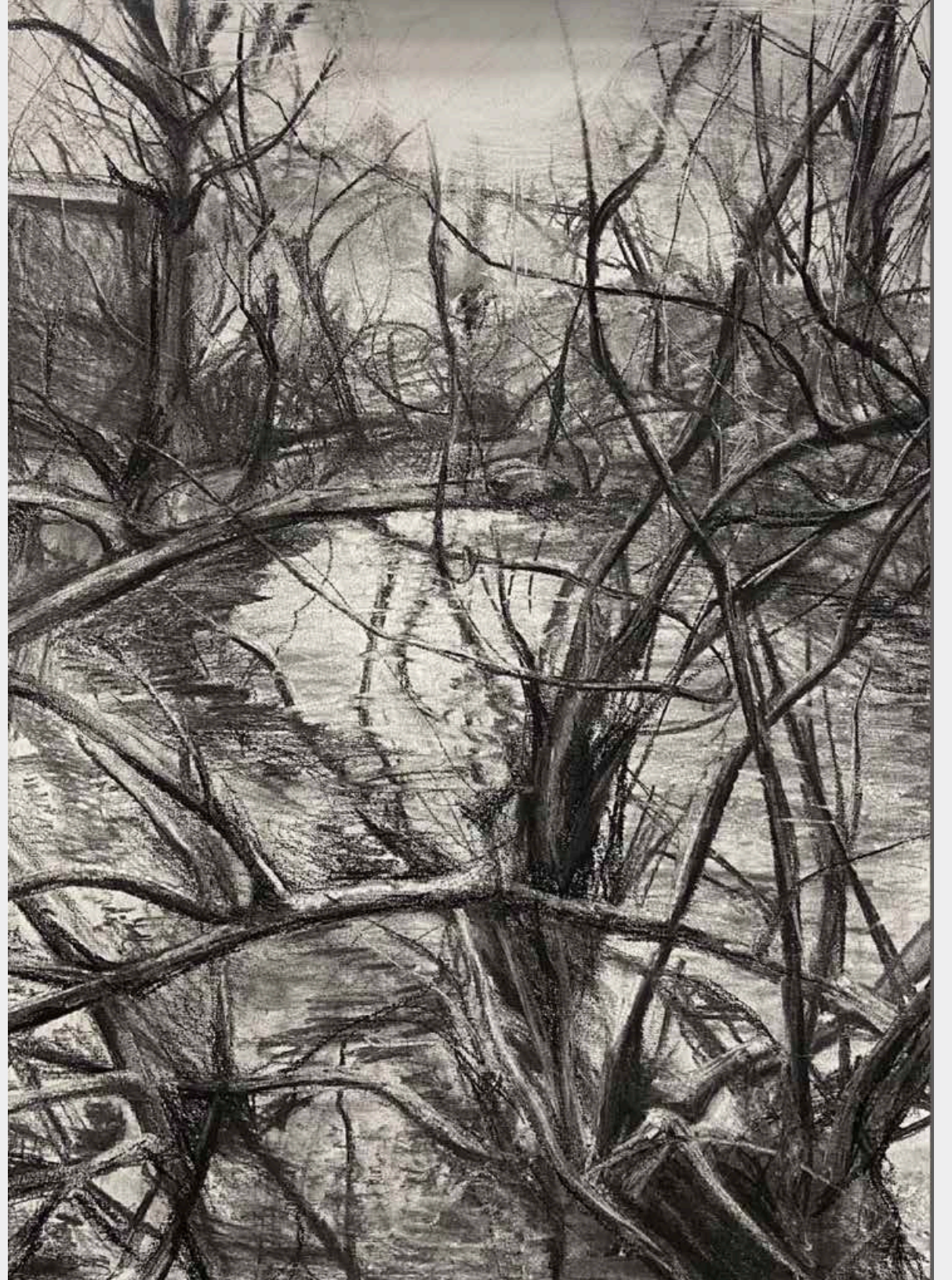
Introduction to Drawing: Intensive
School of the Museum of Fine Art
Interior: Charcoal
18 x 24 in.

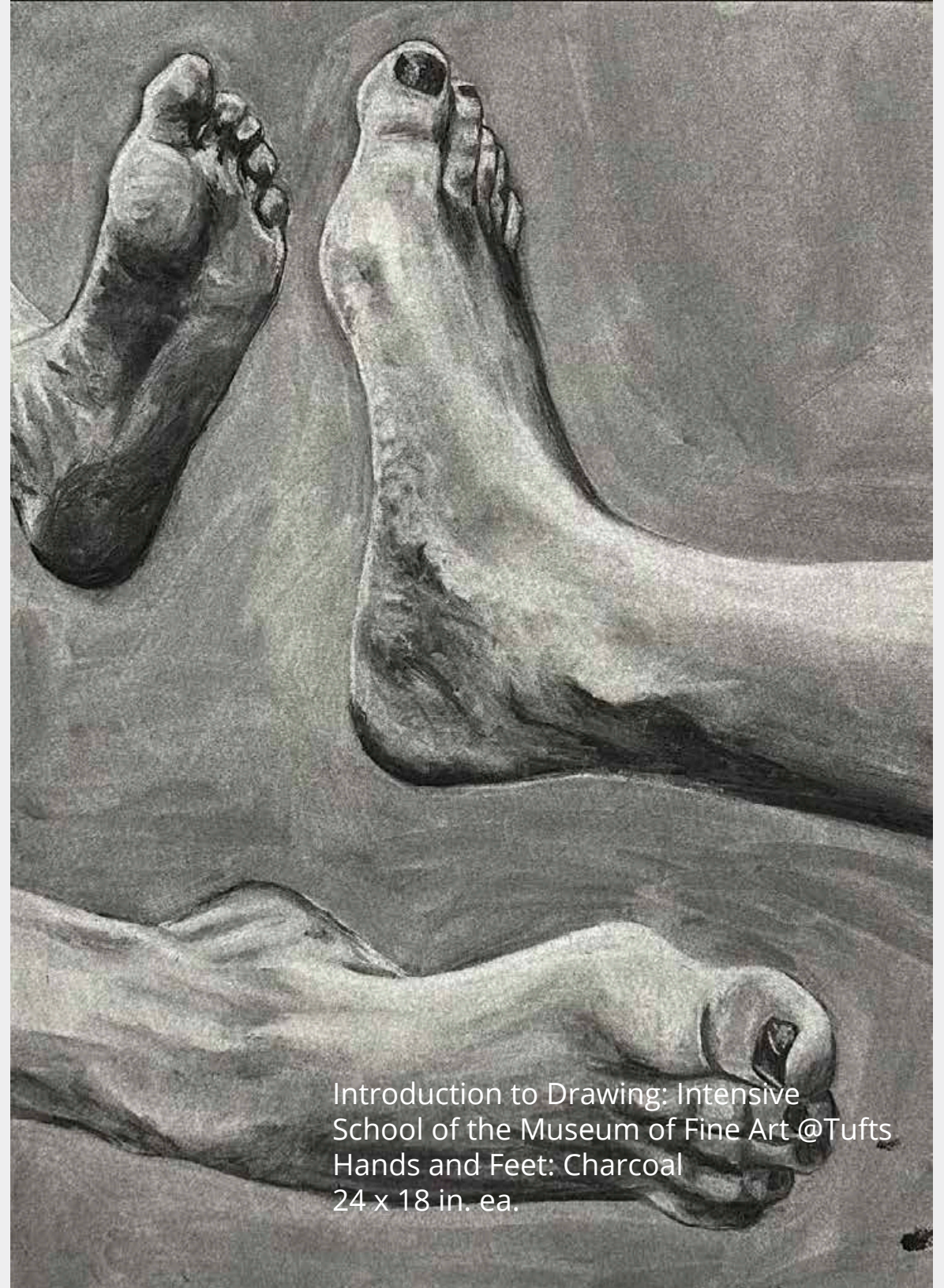


Introduction to Drawing: Intensive
School of the Museum of Fine Art
Interior: Charcoal
18 x 24 in.

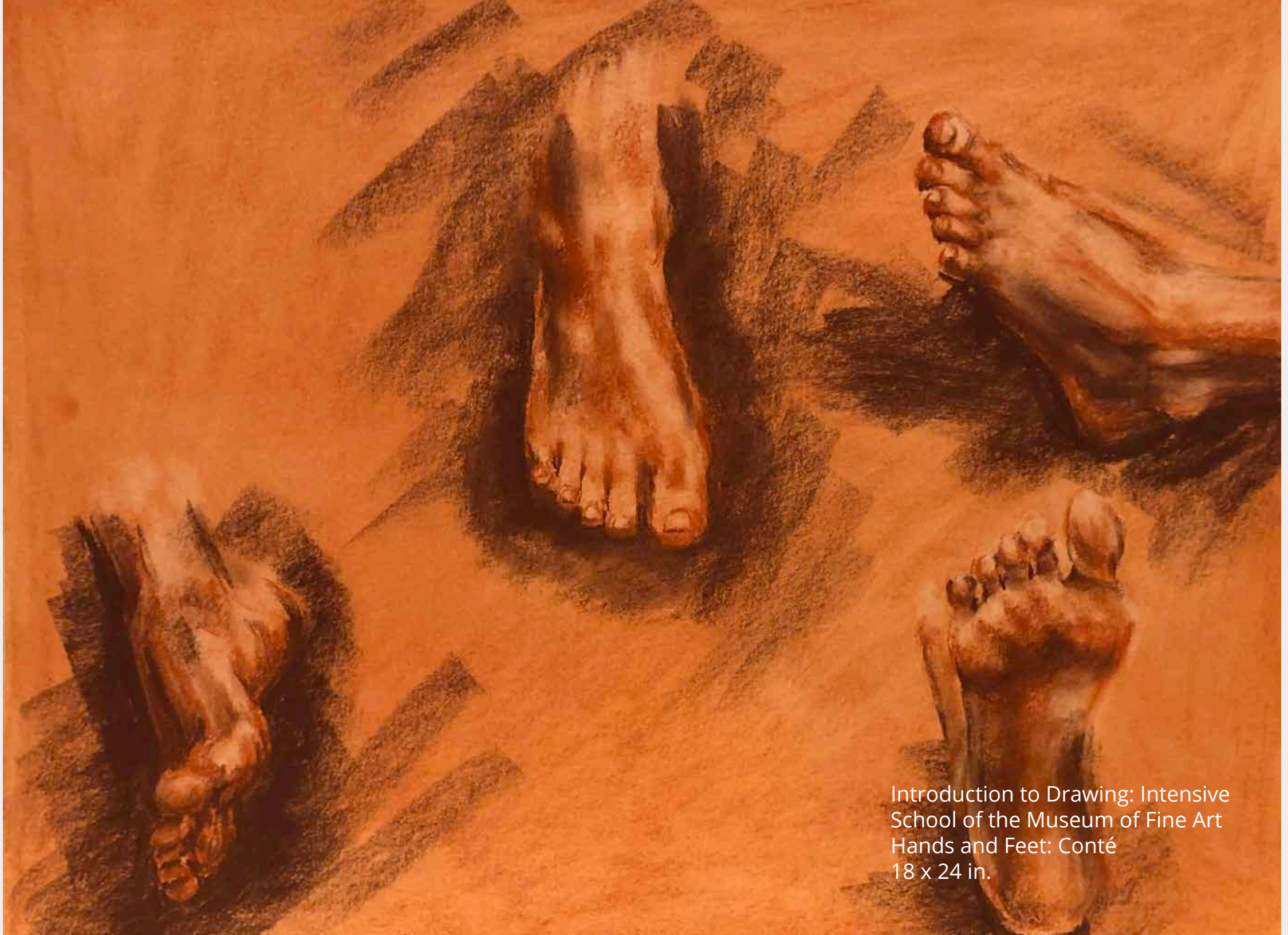


Introduction to Drawing: Intensive
School of the Museum of Fine Art @Tufts
En Plein Air and Studio Landscape: Charcoal
24 x 18 in. ea.





Introduction to Drawing: Intensive
School of the Museum of Fine Art @Tufts
Hands and Feet: Charcoal
24 x 18 in. ea.



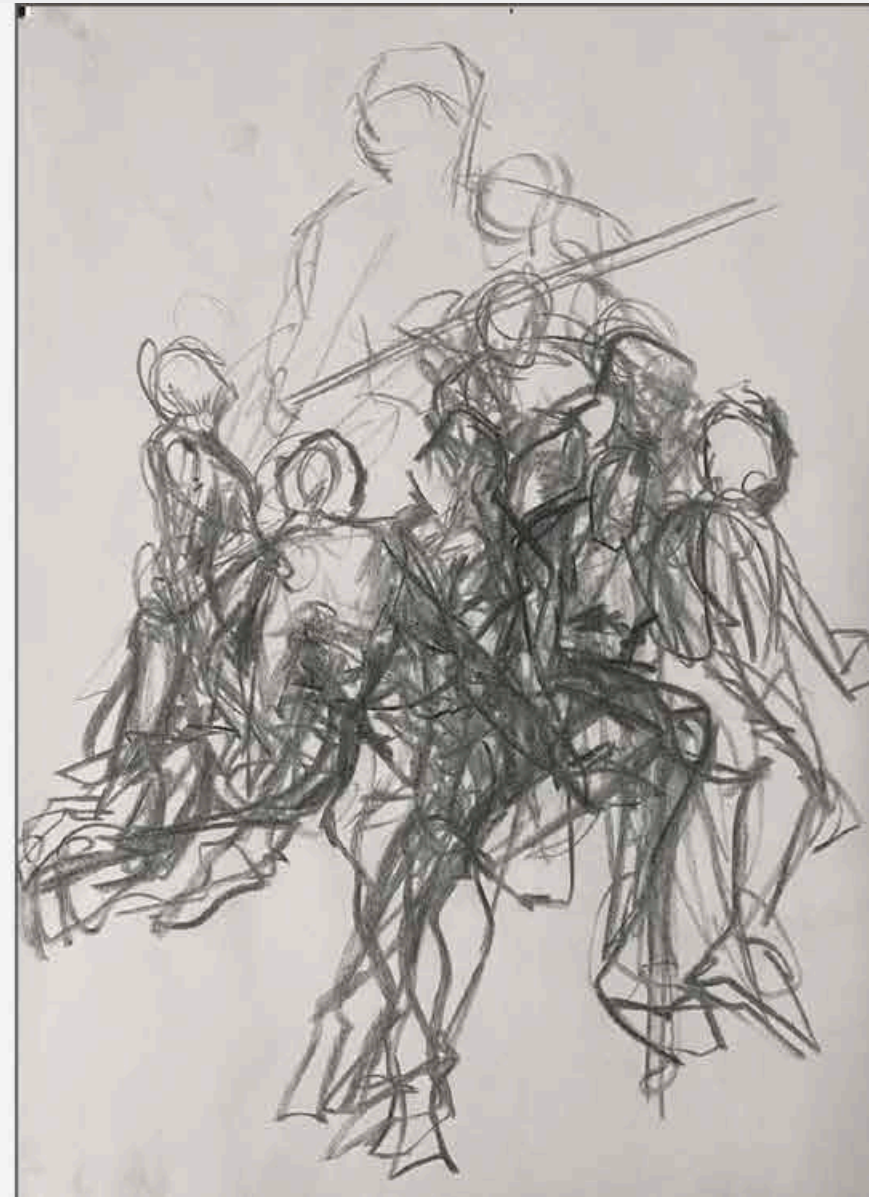
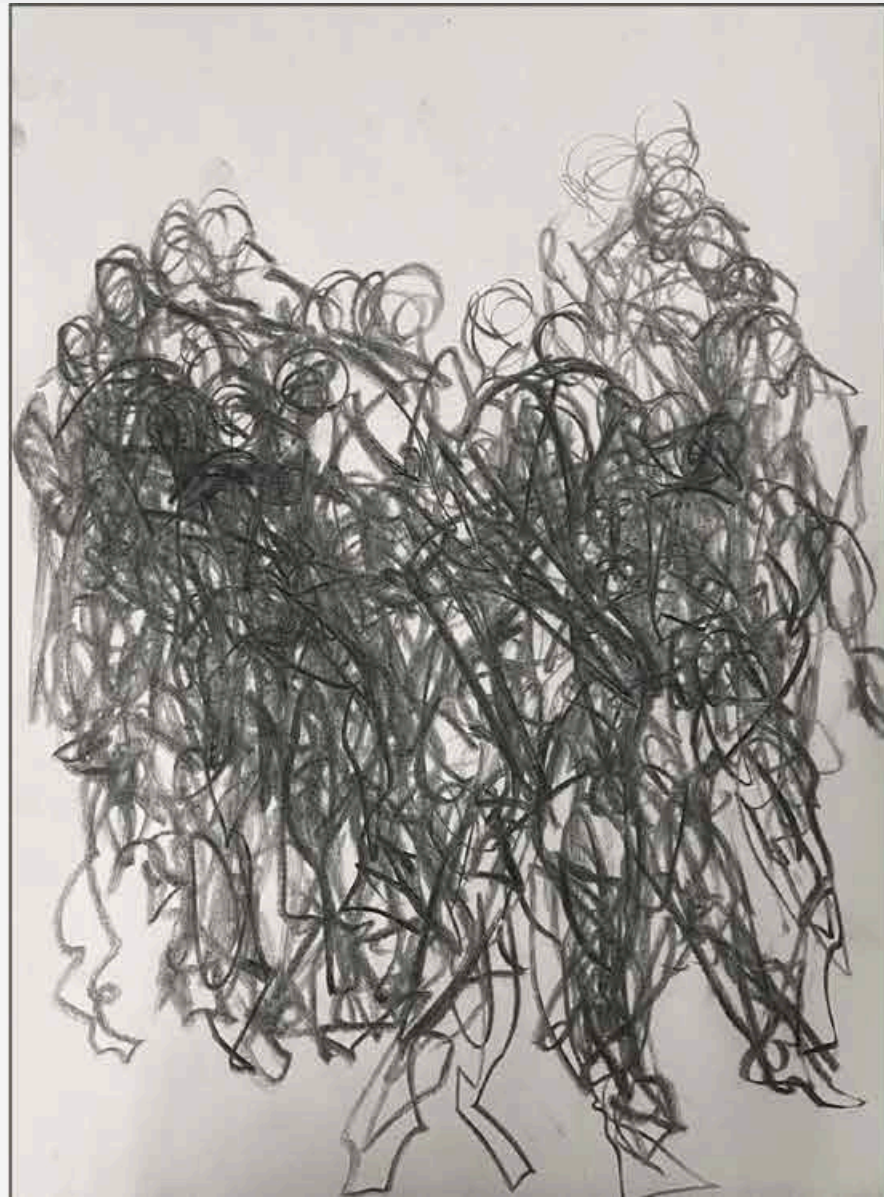
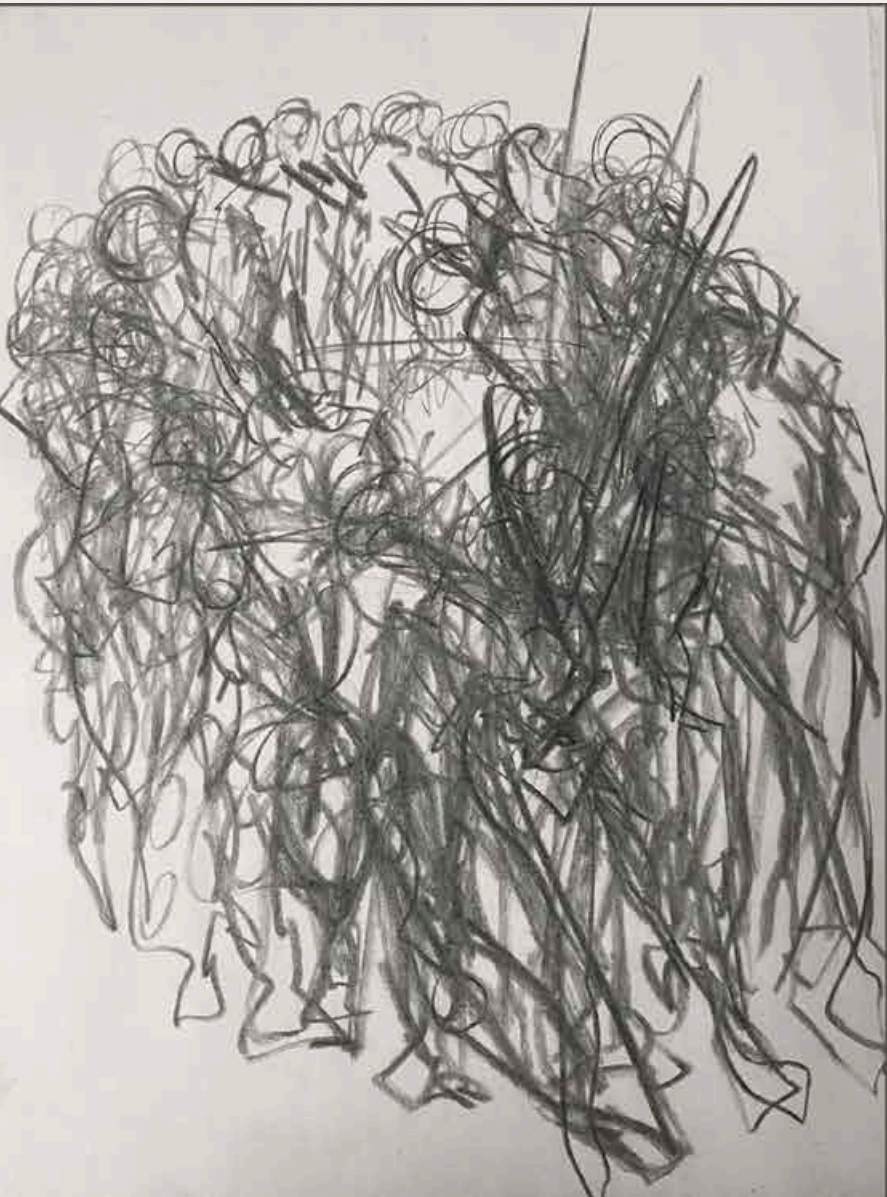
Introduction to Drawing: Intensive
School of the Museum of Fine Art
Hands and Feet: Conté
18 x 24 in.



Drawing 2
studioELL
Crowded interiors: Mixed media
18 x 24 in.



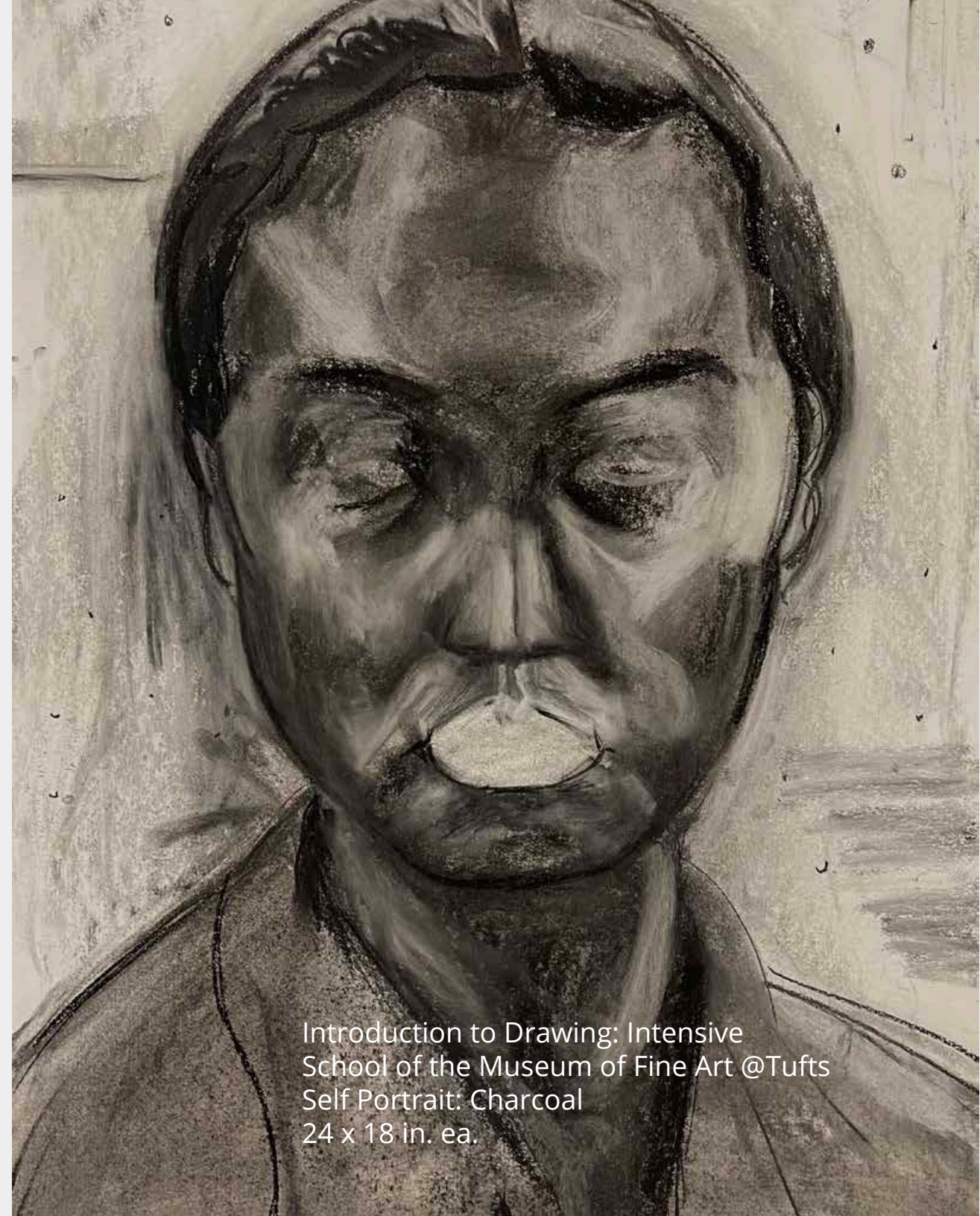
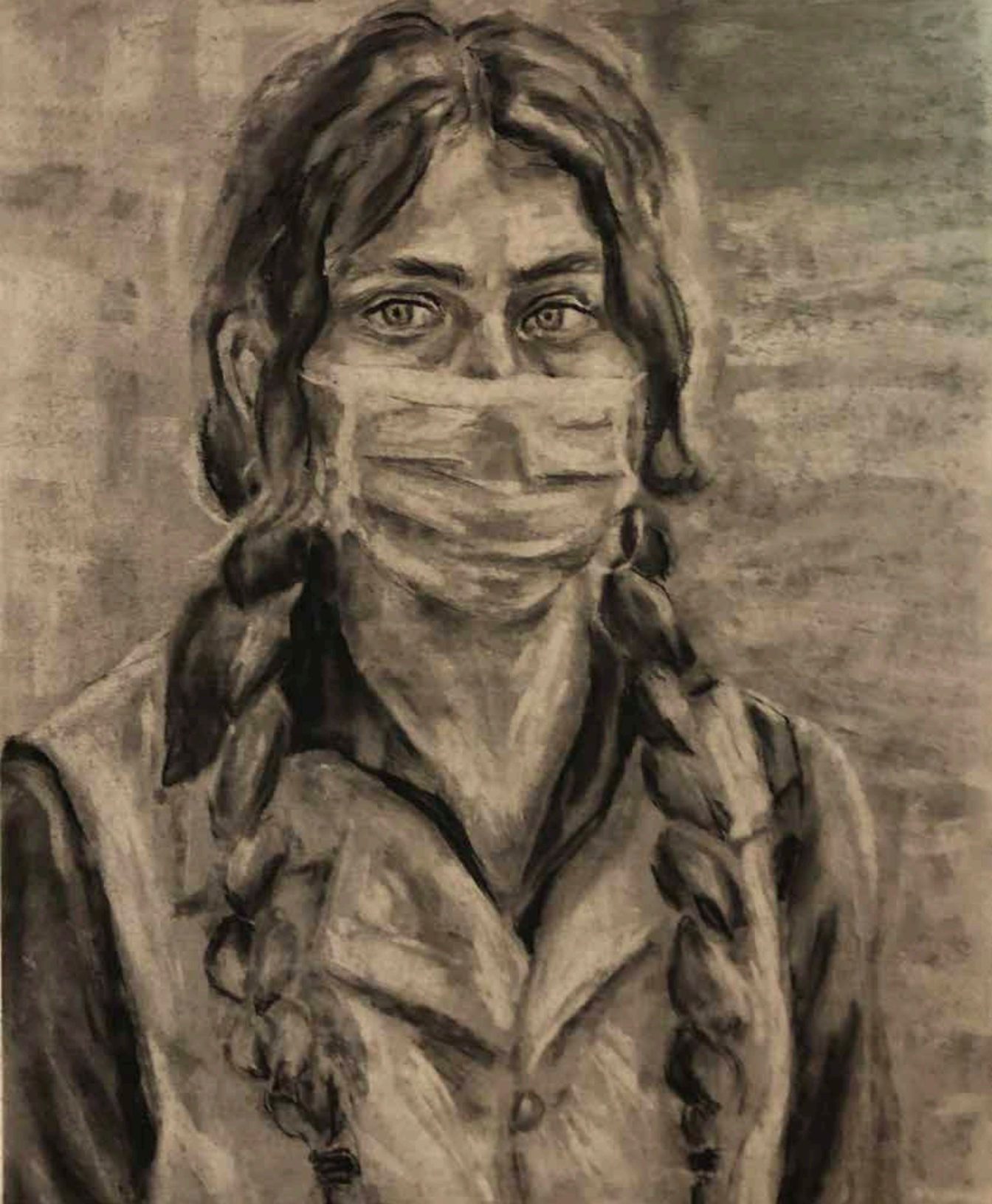
Drawing 2
studioELL
Crowded interiors: Mixed media
18 x 24 in.



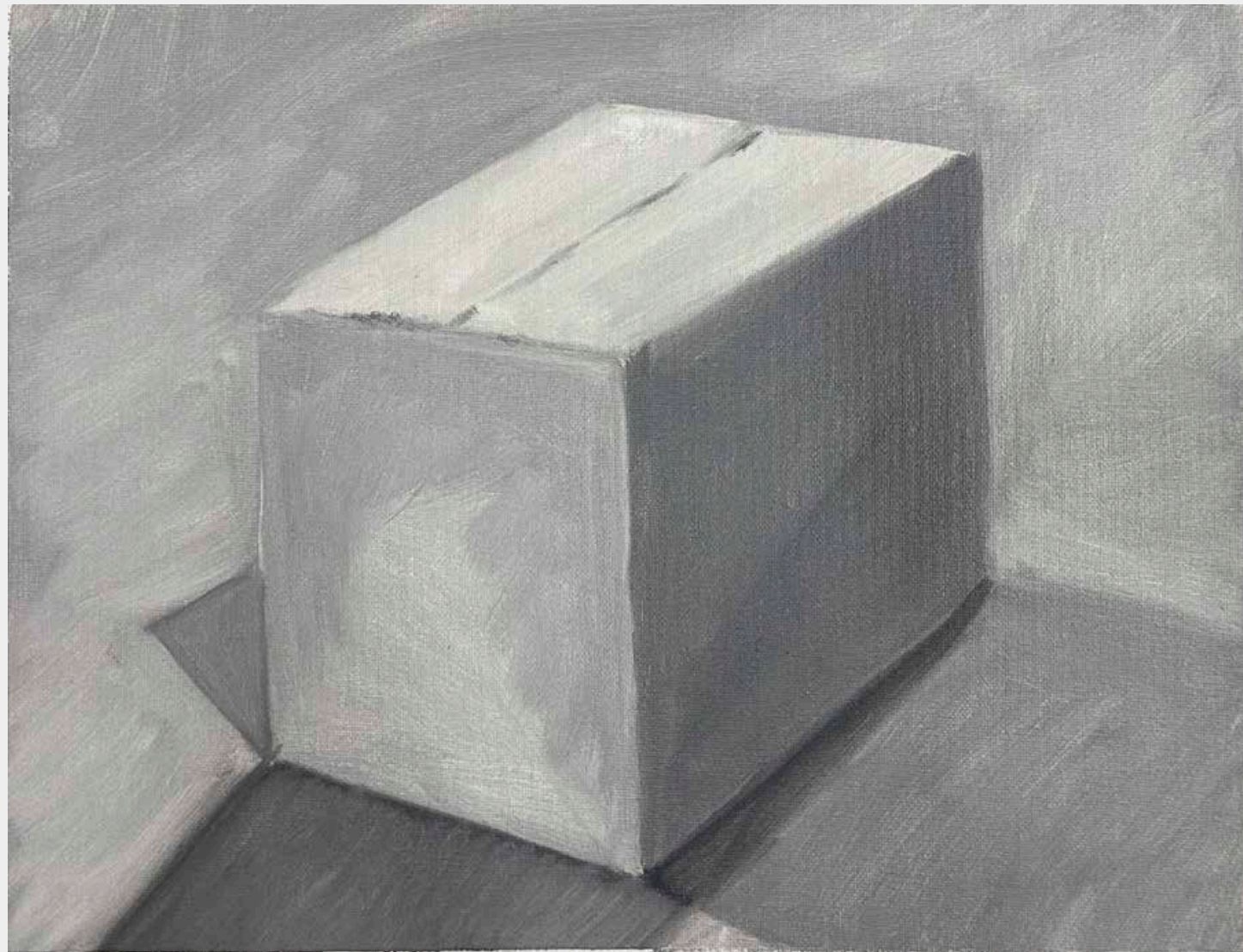
Introduction to Drawing: Intensive
School of the Museum of Fine Art @Tufts
Figure in Motion — Life Drawing: Charcoal
24 x 18 in. ea.



Introduction to Drawing: Intensive
School of the Museum of Fine Art @Tufts
Figure in Motion — Life Drawing: Charcoal
18 x 24 in. ea.



Introduction to Drawing: Intensive
School of the Museum of Fine Art @Tufts
Self Portrait: Charcoal
24 x 18 in. ea.



Painting I
Naugatuck Valley Community College
Grisaille Still-Life Painting
L: 16 x 12 in.
R: 12 x 16 in.



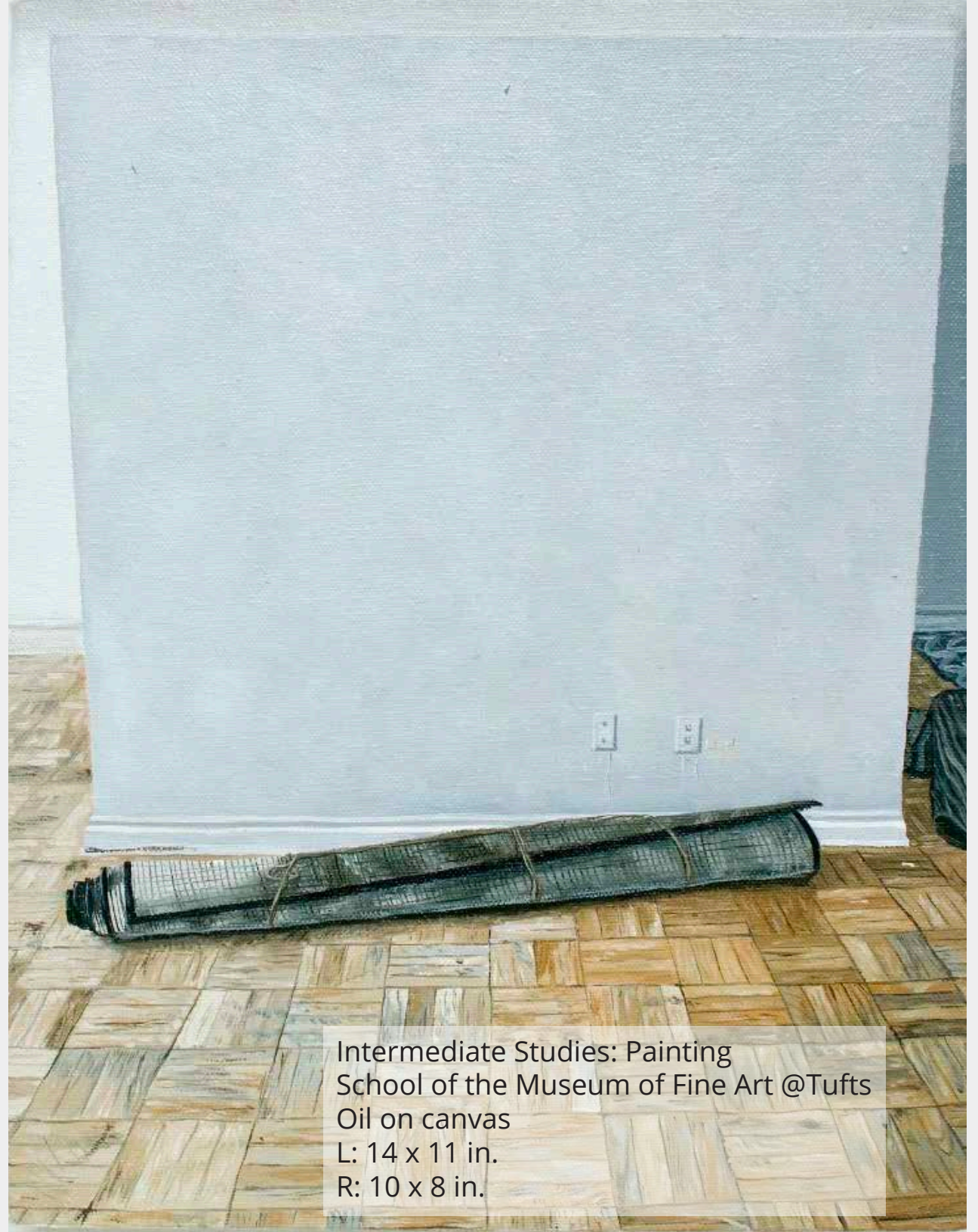
Painting I
Naugatuck Valley Community College
Grisaille Still-Life Painting
12 x 16 in.



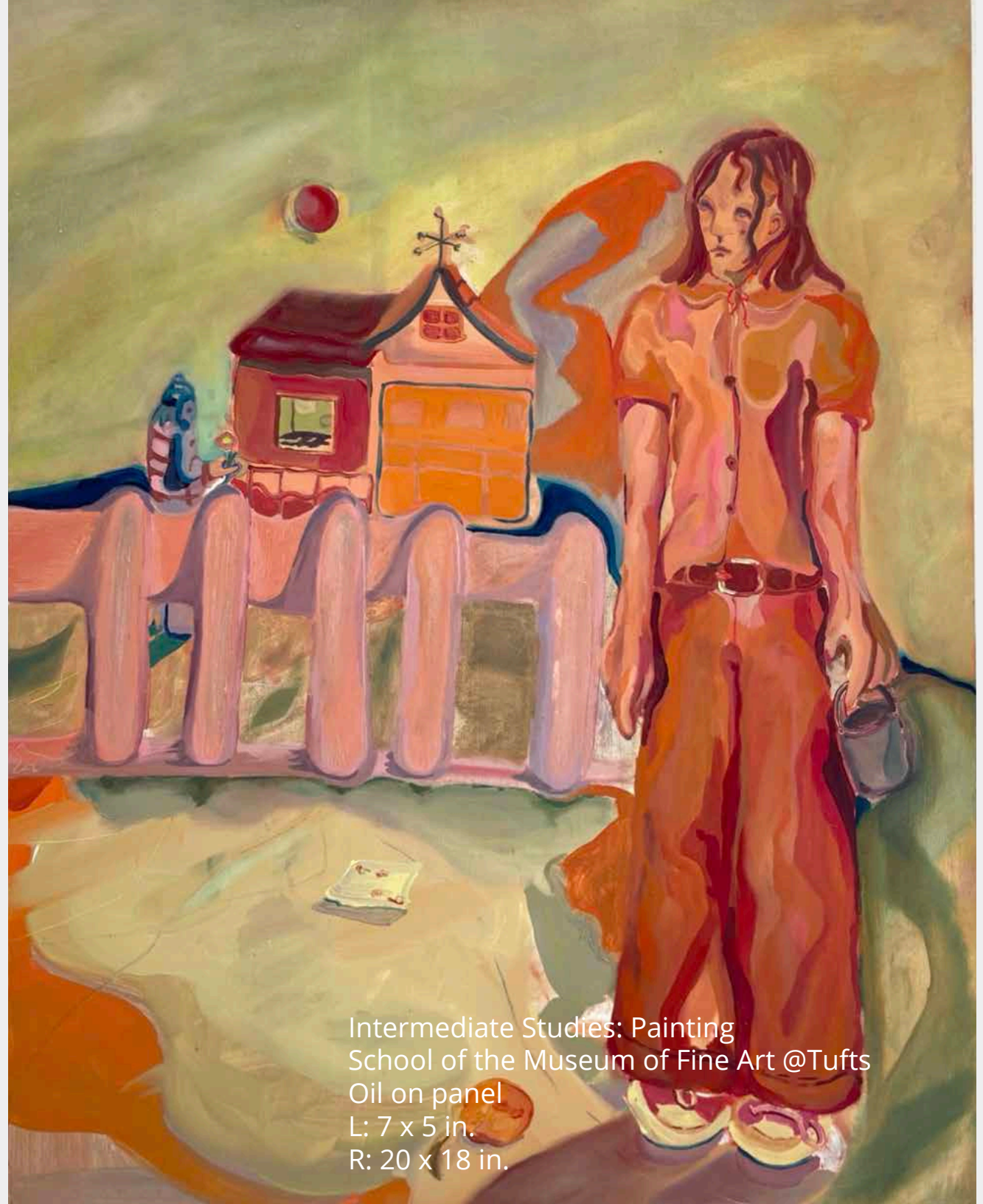
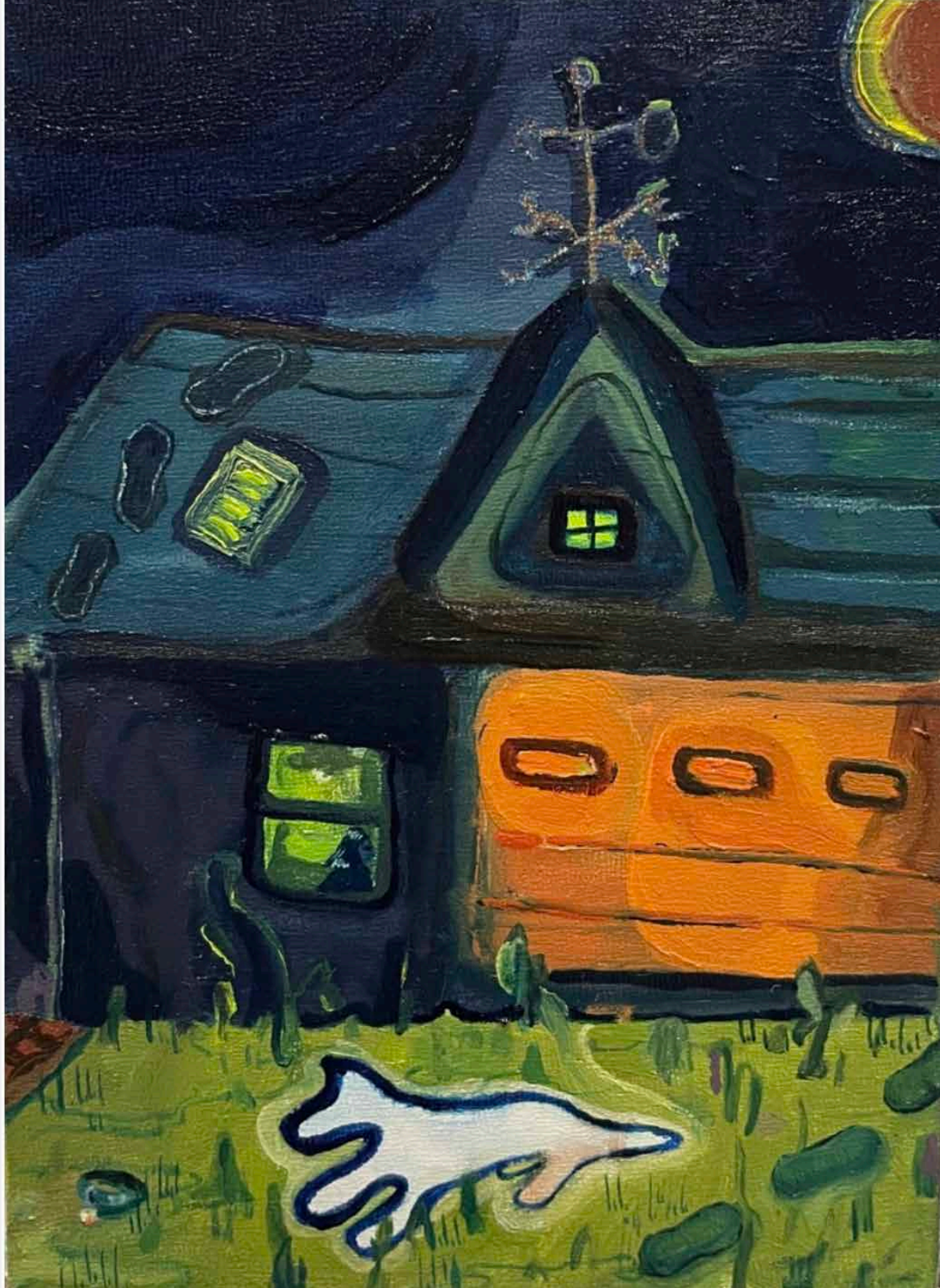
Painting I
Naugatuck Valley Community College
Limited Palette Still-Life Painting
12 x 16 in.



Painting I
Naugatuck Valley Community College
Personal Objects Painting
12 x 16 in.



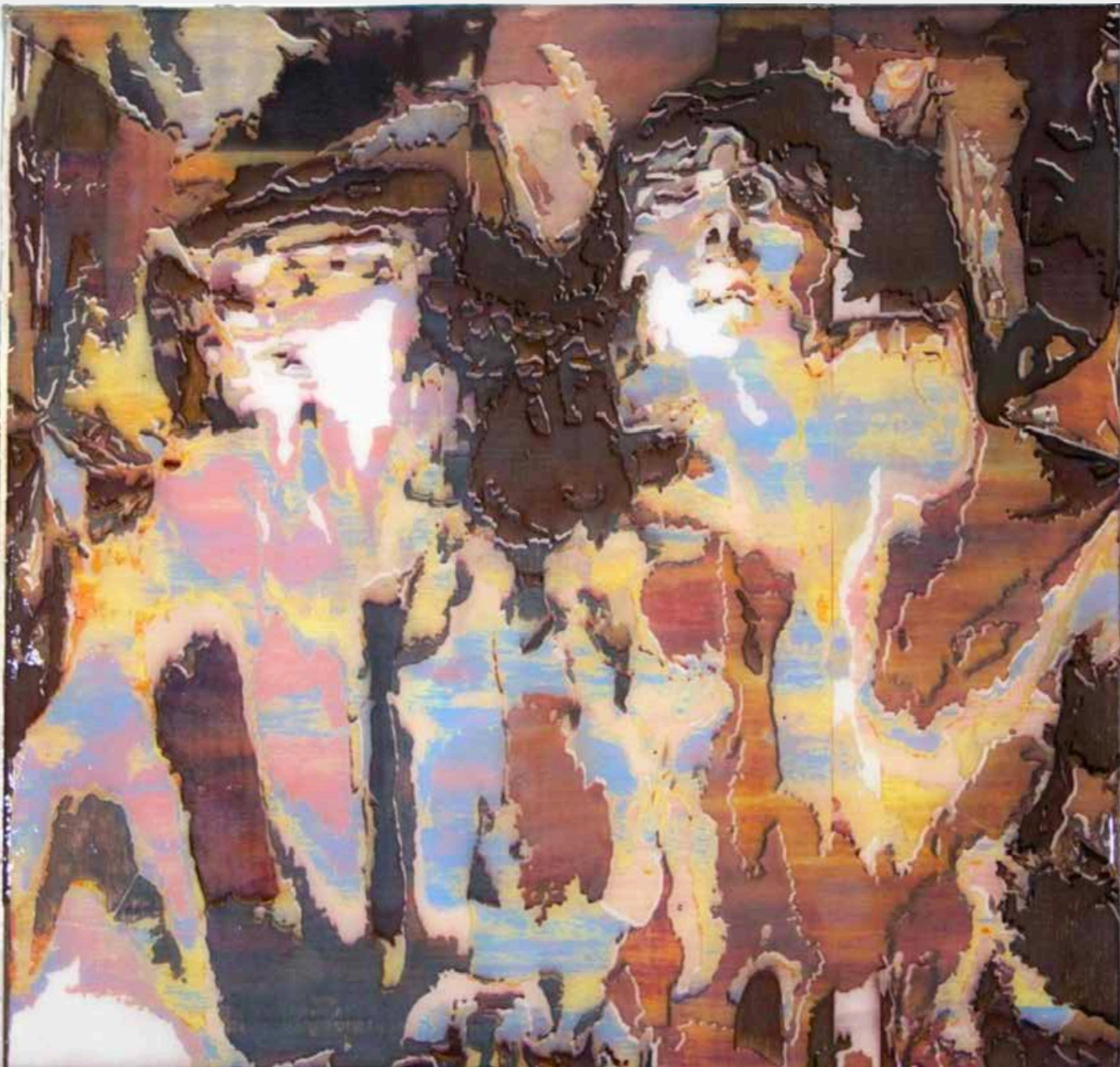
Intermediate Studies: Painting
School of the Museum of Fine Art @Tufts
Oil on canvas
L: 14 x 11 in.
R: 10 x 8 in.



Intermediate Studies: Painting
School of the Museum of Fine Art @Tufts
Oil on panel
L: 7 x 5 in.
R: 20 x 18 in.



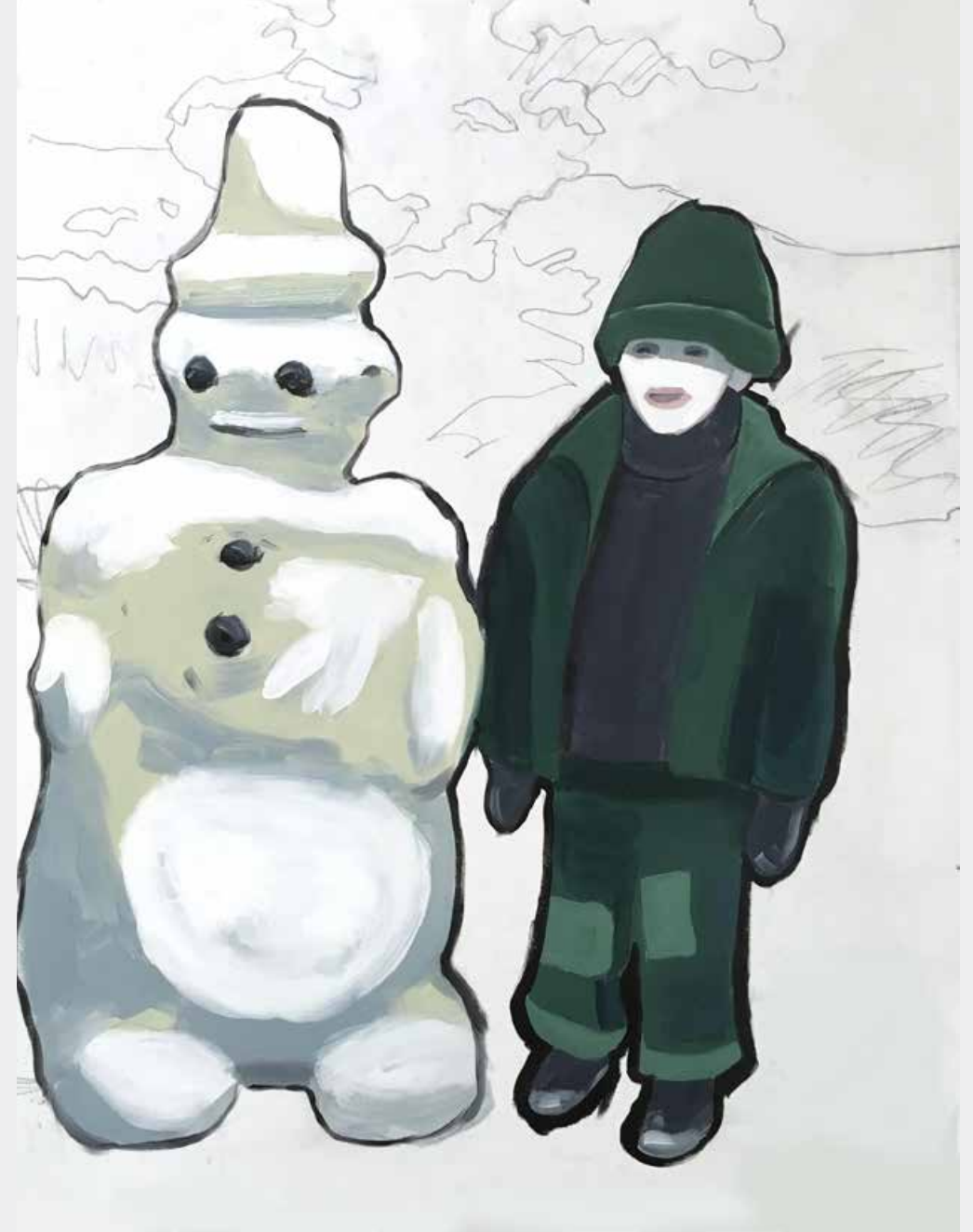
Intermediate Studies: Painting
School of the Museum of Fine Art @Tufts
Oil on board
12 x 24 in.



Intermediate Studies: Painting
School of the Museum of Fine Art @Tufts
Laser-cut, acrylic on wood
L: 11 x 11.5 in.
R: 8 x 8.5 in.



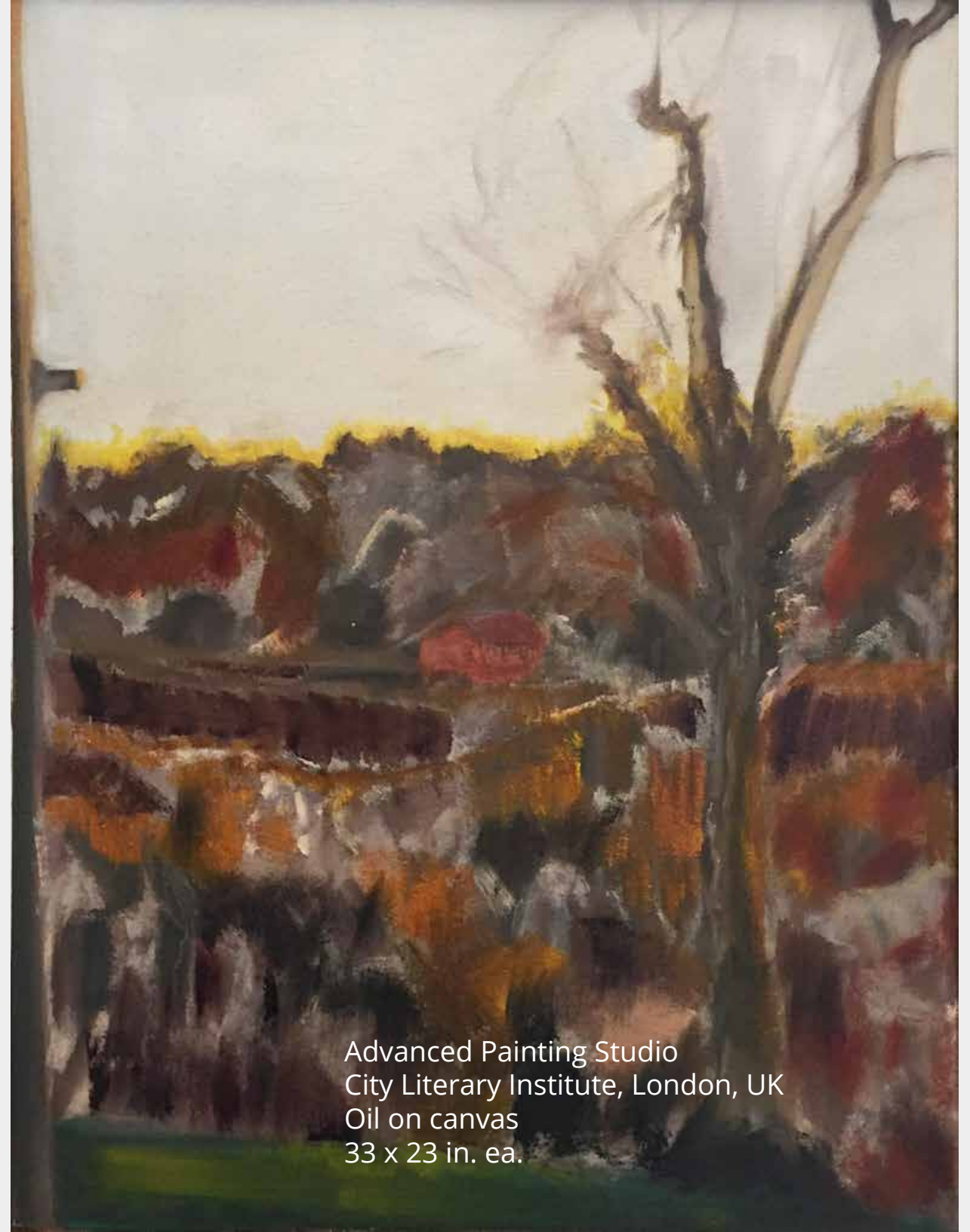
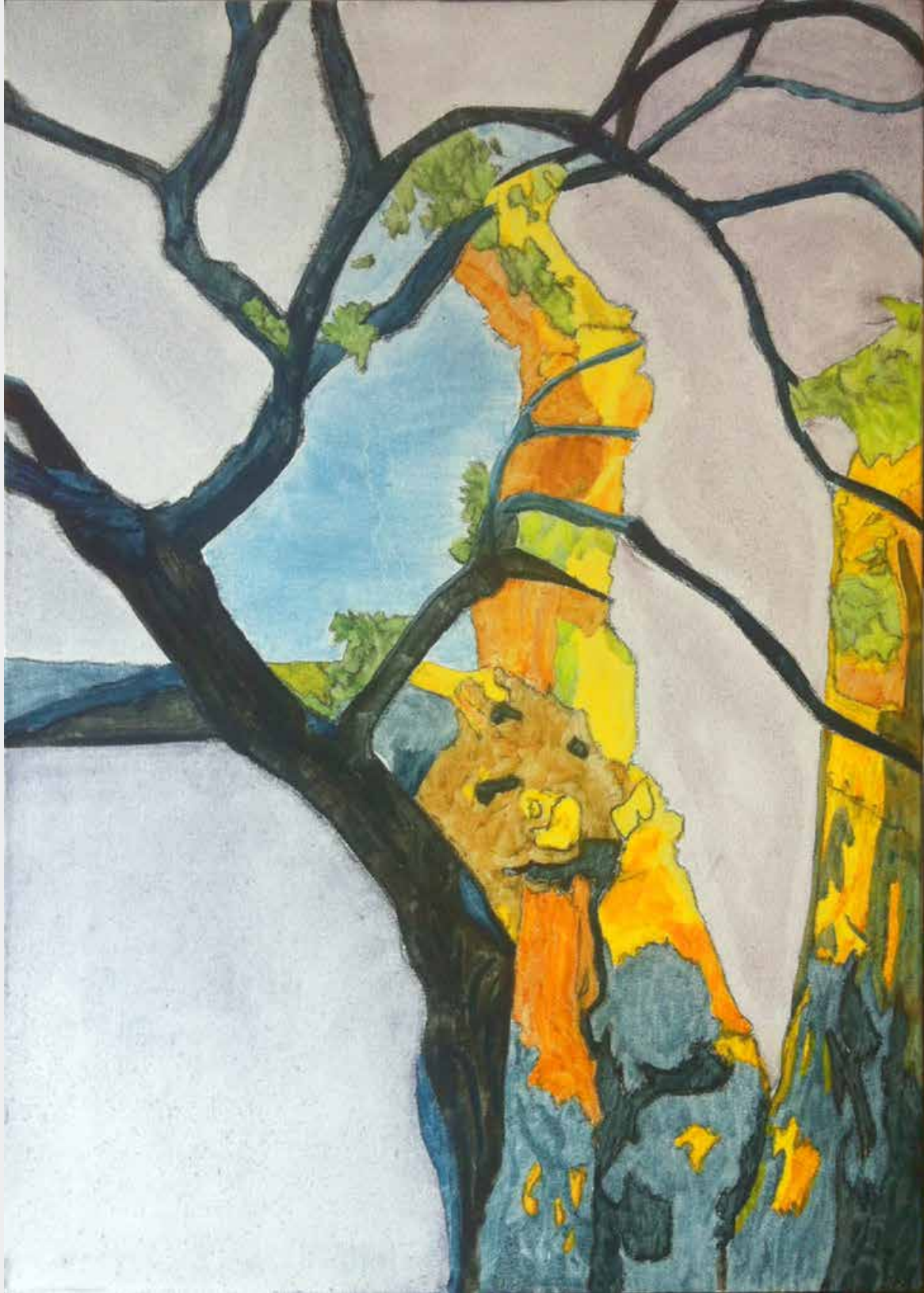
Intermediate Studies: Painting
School of the Museum of Fine Art @Tufts
Oil on canvas
3 x 3 in. ea.



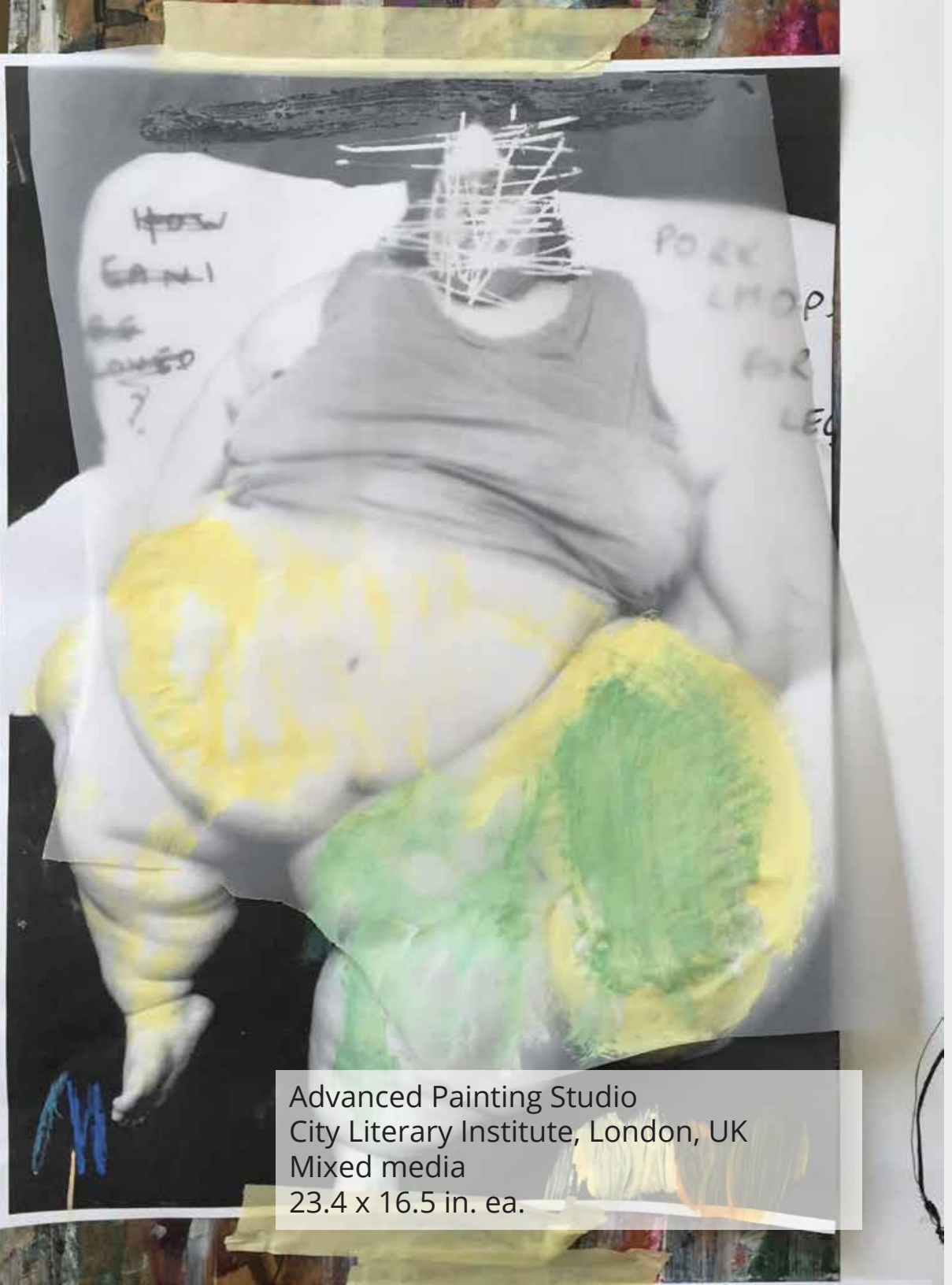
Graduate Studies: Painting
James Madison University
Oil on canvas
L: 40 x 30 in.
R: 24 x 18 in.



Independent Study — Studio Art
James Madison University
Oil on canvas
70 x 60 in.



Advanced Painting Studio
City Literary Institute, London, UK
Oil on canvas
33 x 23 in. ea.



Advanced Painting Studio
City Literary Institute, London, UK
Mixed media
23.4 x 16.5 in. ea.



Advanced Painting Studio
City Literary Institute, London, UK
Oil on canvas
36 x 36 in. ea.

j o h n r o s
johnros.com
studio@johnros.com